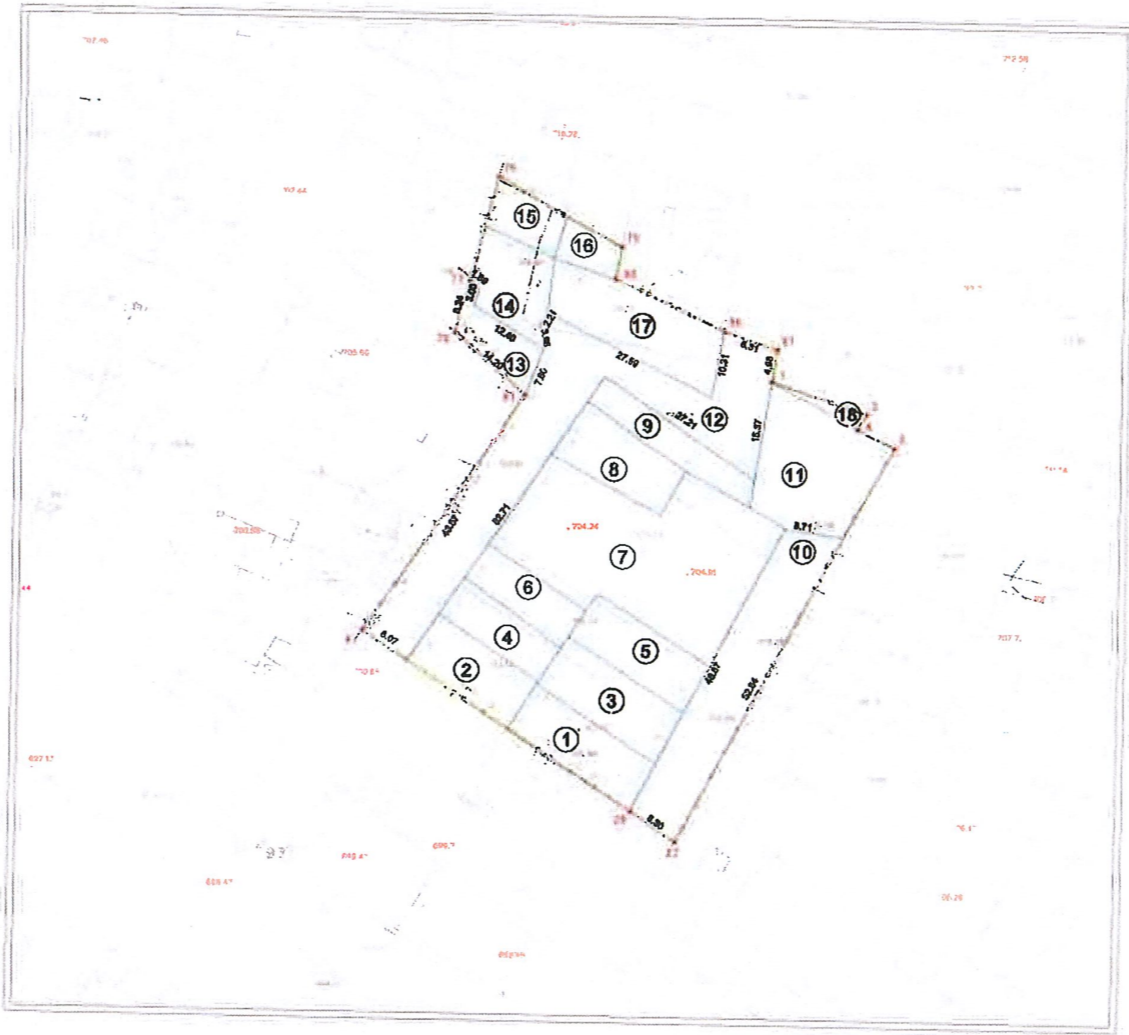




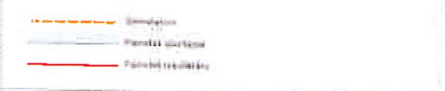
COORDENADAS		COORDENADAS	
Nº punto	NORTE	Nº punto	ESTE
1	427940.22	42	427940.20
2	427940.20	43	427940.20
3	427940.20	44	427940.20
4	427940.20	45	427940.20
5	427940.20	46	427940.20
6	427940.20	47	427940.20
7	427940.20	48	427940.20
8	427940.20	49	427940.20
9	427940.20	50	427940.20
10	427940.20	51	427940.20
11	427940.20	52	427940.20
12	427940.20	53	427940.20
13	427940.20	54	427940.20
14	427940.20	55	427940.20
15	427940.20	56	427940.20
16	427940.20	57	427940.20
17	427940.20	58	427940.20
18	427940.20	59	427940.20
19	427940.20	60	427940.20
20	427940.20	61	427940.20
21	427940.20	62	427940.20
22	427940.20	63	427940.20
23	427940.20	64	427940.20
24	427940.20	65	427940.20
25	427940.20	66	427940.20
26	427940.20	67	427940.20
27	427940.20	68	427940.20
28	427940.20	69	427940.20
29	427940.20	70	427940.20
30	427940.20	71	427940.20
31	427940.20	72	427940.20
32	427940.20	73	427940.20
33	427940.20	74	427940.20
34	427940.20	75	427940.20
35	427940.20	76	427940.20
36	427940.20	77	427940.20
37	427940.20	78	427940.20
38	427940.20	79	427940.20
39	427940.20	80	427940.20
40	427940.20	81	427940.20
41	427940.20	82	427940.20
42	427940.20	83	427940.20
43	427940.20	84	427940.20
44	427940.20	85	427940.20



FINCA APORTADA	Nº FINCA REGISTRAL	SUP REGISTRAL	SUPERFICIE ADOPTADA (M ²)
1	21.120	175,82	175,82
2	1.874	153,55	153,55
3	28588	189,78	189,78
4	1.749	117,26	117,26
5	1188	161,55	161,55
6	18.820	117,96	117,96
7	5.877	742,50	742,50
8	17.144	180,77	180,77
9	6.049	128,78	128,78
10	(*)	-	418,55
11	81.898	314,33	314,33
12	(*)	-	741,50
13	11.725	329,00	329,00
14	20.740	147,87	147,87
15	22.816	82,50	82,50
16	22.319	59,58	59,58
17	19.904	257,58	257,58
18	24.884	23,24	23,24

(*) Parcelas pendientes de Inmatriculación pertenecientes al Ayuntamiento por tiempo inmemorial

TOTAL DELIMITACION DEL ÁMBITO: 4.068,77



MODIFICACIÓN PROYECTO REPARCELACIÓN
 APR.05-05 CALLE MATADERO

PROYECTISTA: JUNTA DE CONSERVACION DE BARRIOS MATADERO - 450 200
 CALLE MATADERO, 154/160

03

FECHA DE APROBACIÓN: 17/12/2020

PROYECTO: JUNTA DE CONSERVACION DE BARRIOS MATADERO

