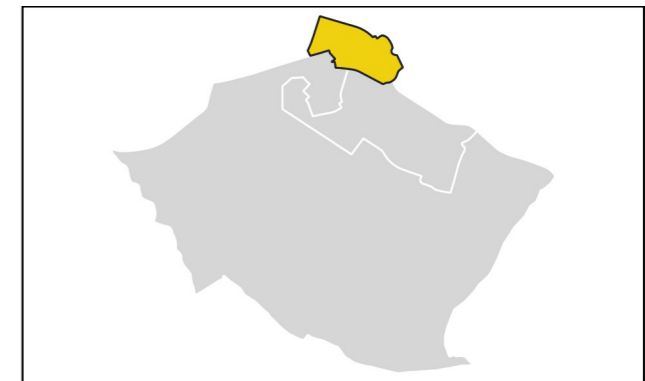


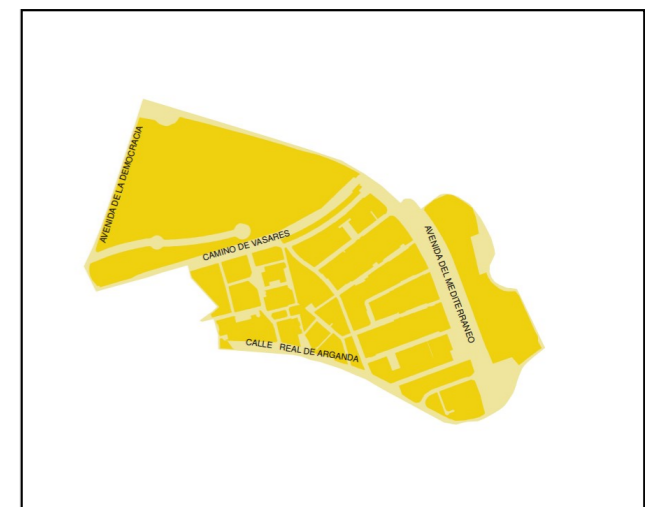
18 Villa de Vallecas

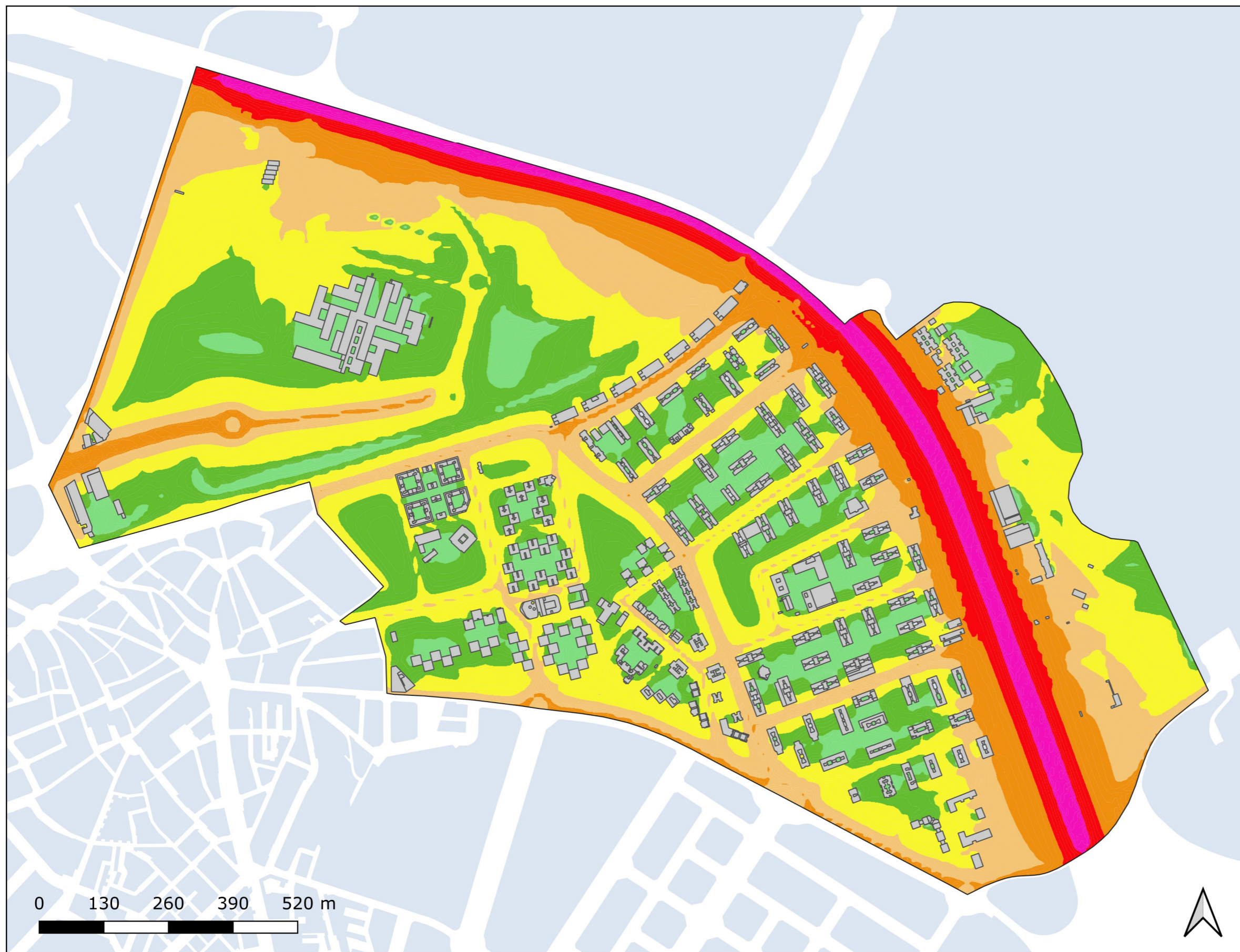
Ag_MAD_Madrid_C_Ld_18_2
8_1R_18_2



Población Expuesta

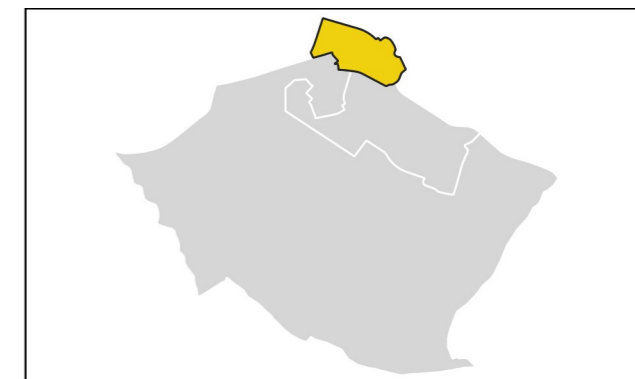
Barrio	L _d	
	Rango de Exposición dBA	Nº Personas (centenas)
18.2 Santa Eugenia	< 55	151
	55 - 60	60
	60 - 65	20
	65 - 70	10
	70 - 75	0
	> 75	0





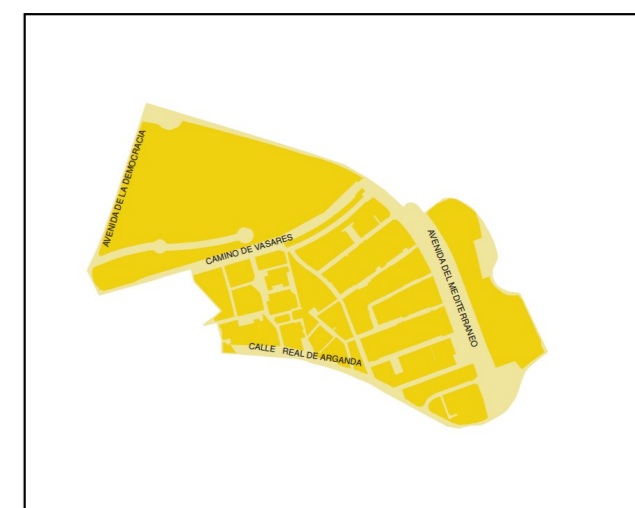
18 Villa de Vallecas

Ag_MAD_Madrid_C_Le_18_2
8_2R_18_2

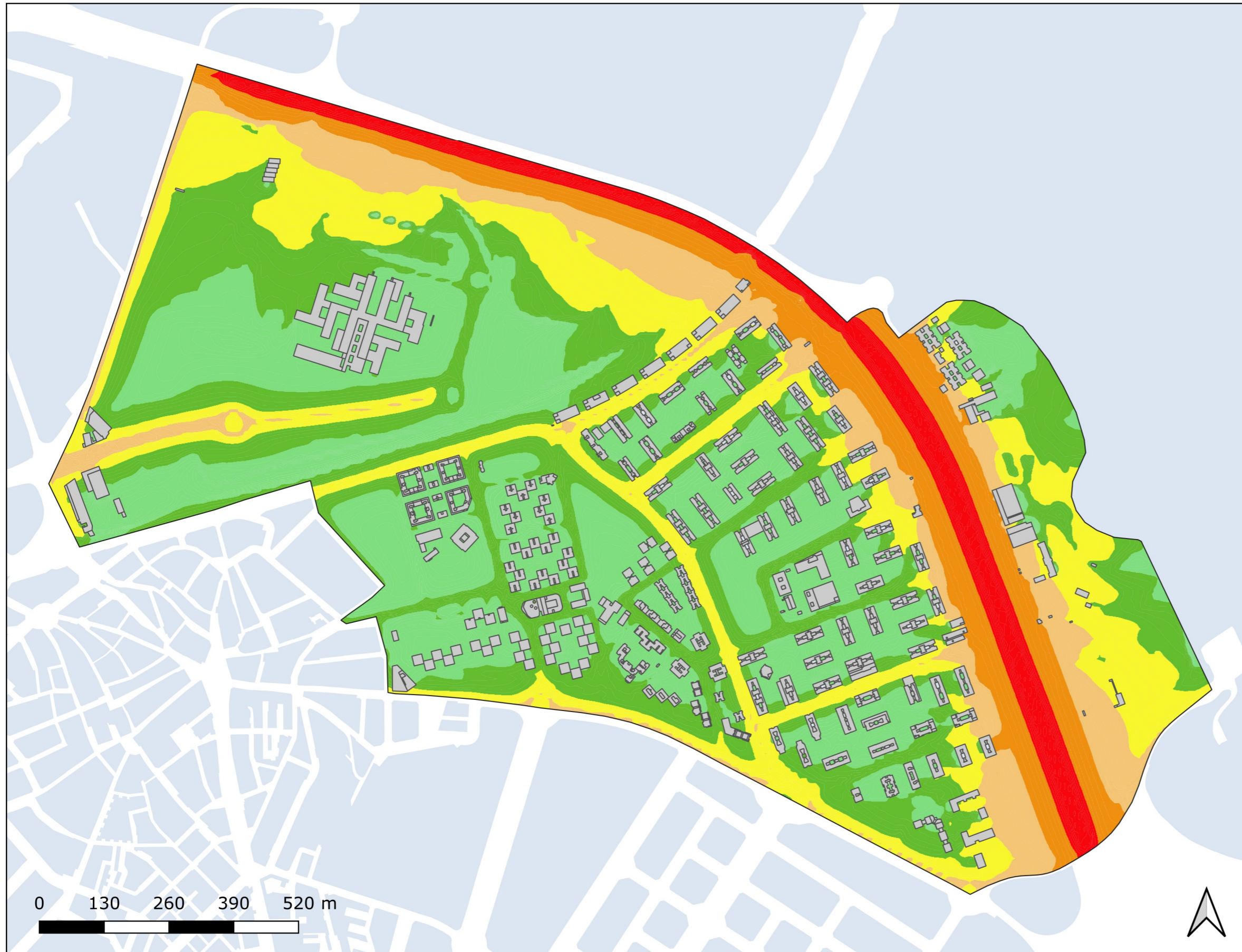
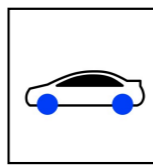


Población Expuesta

Barrio	L_e	
	Rango de Exposición dBA	Nº Personas (centenas)
18.2 Santa Eugenia	< 55	164
	55 - 60	54
	60 - 65	18
	65 - 70	7
	70 - 75	0
	> 75	0

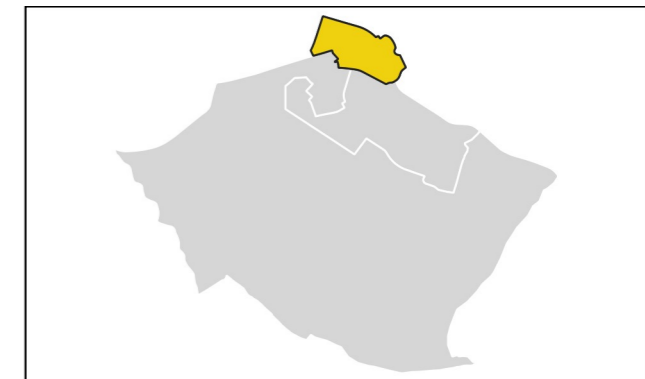


L_e	< 50 dB(A)		Edificio
	50-55 dB(A)		Parcela
	55-60 dB(A)		Barrera acústica
	60-65 dB(A)		Límite administrativo
	65-70 dB(A)		
	70-75 dB(A)		
	> 75 dB(A)		



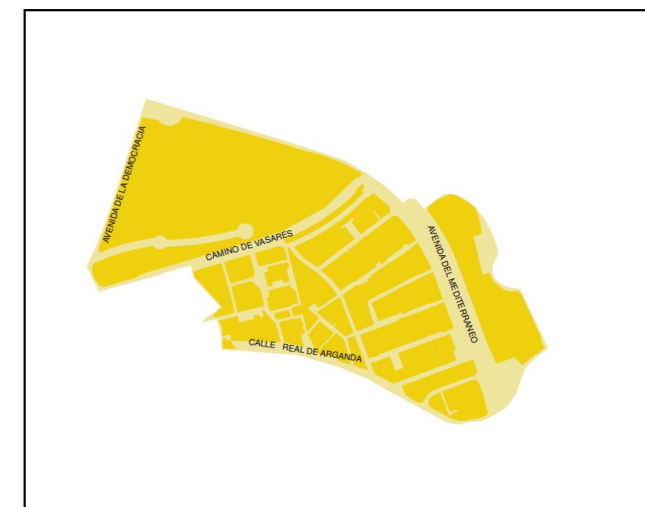
18 Villa de Vallecas

Ag_MAD_Madrid_C_Ln_18_2
8_3R_18_2



Población Expuesta

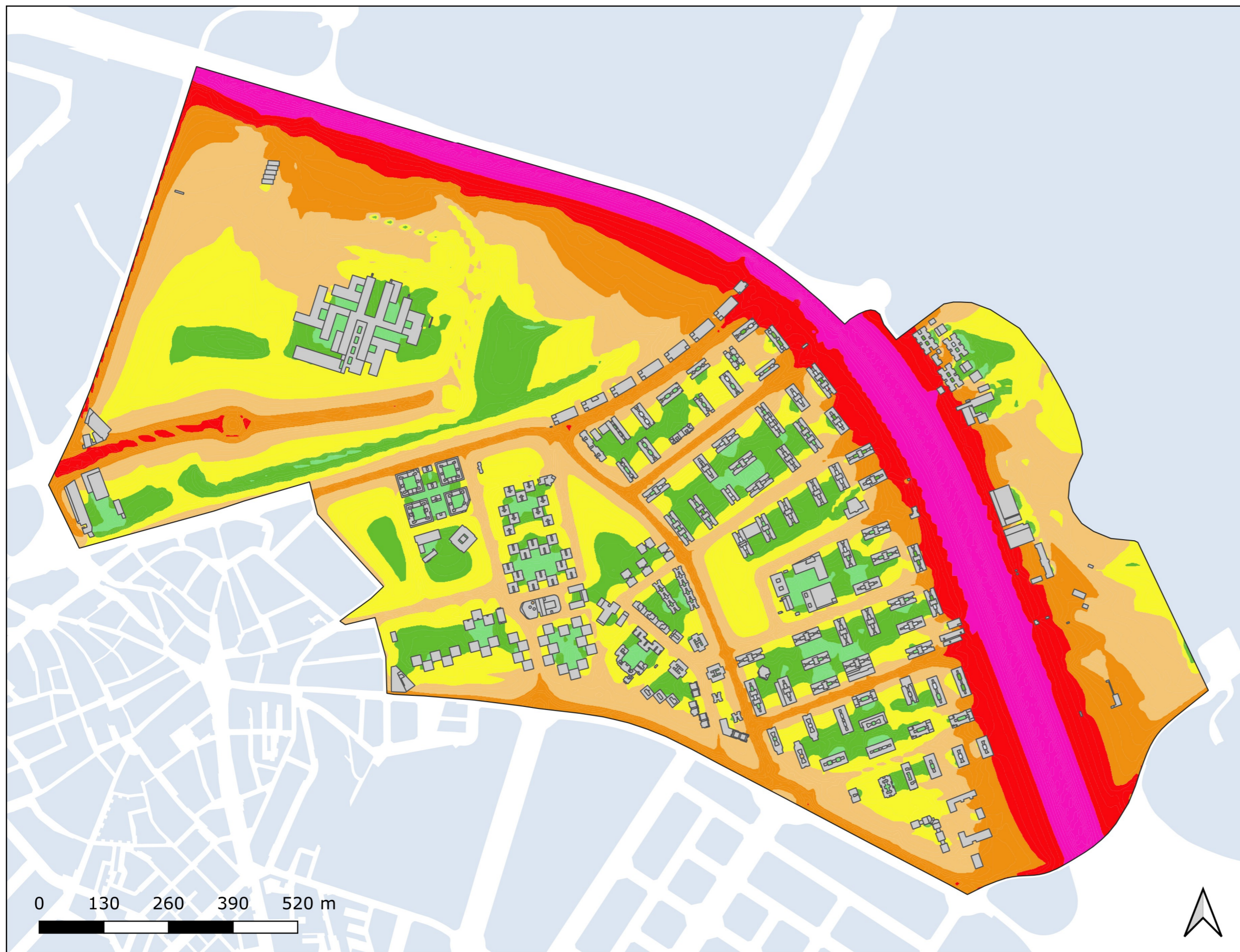
Barrio	L_n	
	Rango de Exposición dBA	Nº Personas (centenas)
18.2 Santa Eugenia	< 50	163
	50 - 55	44
	55 - 60	22
	60 - 65	12
	65 - 70	0
	> 70	0



L_n

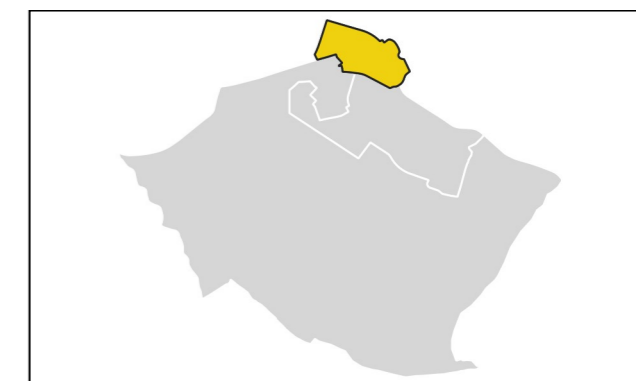
- < 50 dB(A)
- 50-55 dB(A)
- 55-60 dB(A)
- 60-65 dB(A)
- 65-70 dB(A)
- > 70 dB(A)

- Edificio
- Parcela
- Barrera acústica
- Límite administrativo



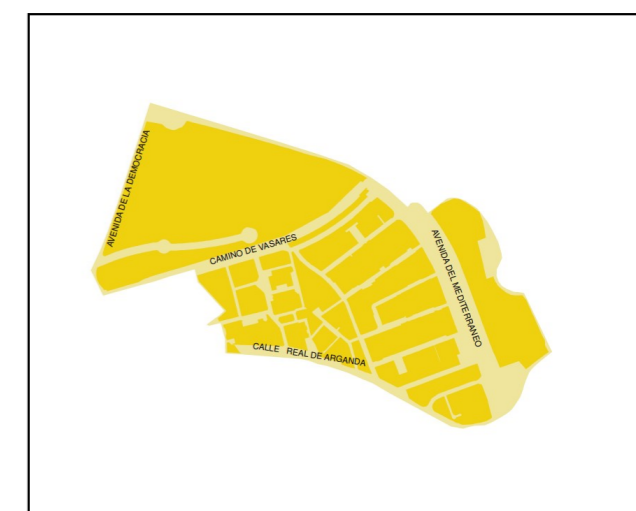
18 Villa de Vallecas

Ag_MAD_Madrid_C_Lden_18_2
8_4R_18_2



Población Expuesta

Barrio	L_{den}	
	Rango de Exposición dBA	Nº Personas (centenas)
18.2 Santa Eugenia	< 55	123
	55 - 60	55
	60 - 65	42
	65 - 70	15
	70 - 75	7
	> 75	0



L_{den}

- < 50 dB(A)
- 50-55 dB(A)
- 55-60 dB(A)
- 60-65 dB(A)
- 65-70 dB(A)
- 70-75 dB(A)
- > 75 dB(A)

- Edificio
- Parcela
- Barrera acústica
- Límite administrativo